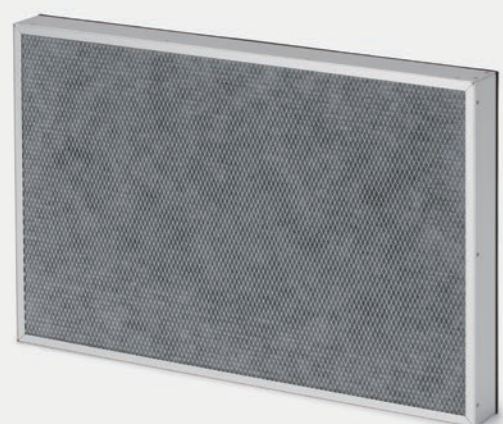


# CleanSorb® II

Activated carbon fiber chemical filter

Activation of high purity carbon fiber realizes a high-performance physical adsorption capacity



CH series



CM series



Filter type



Also for medium performance use



Pleated structure



Honeycomb structure

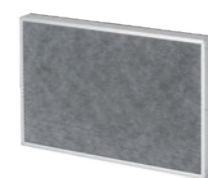


For FFU



For equipment

## Features of the series



### CH

[Structure] Honeycomb structure

[Features] It has a pore structure peculiar to carbon fiber and has high performance in adsorbing contaminants in the air.

[Applications] Management of clean room/Semiconductor manufacturing equipment



### CM

[Structure] Pleated structure

[Features] Corresponds to large airflow with low-pressure loss, and it can be used in combination with air filter (medium performance).

[Applications] Outside air treatment measures/Clean room circulation system/ Exhaust treatment measures

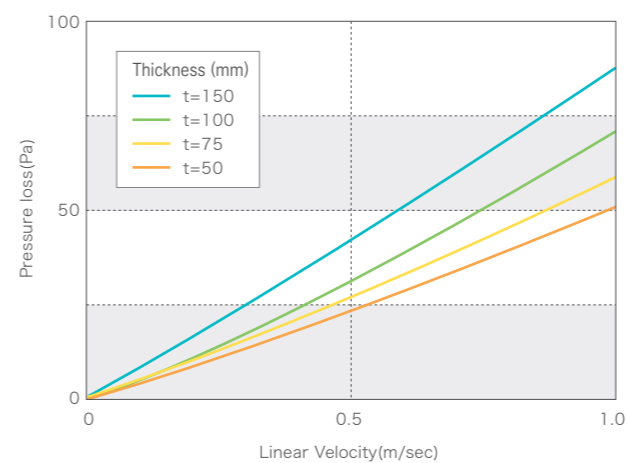
## Types of target substances and media

Type of Media	Type of Filter		Target gas	Typical target gases
	CH	CM		
C	○	○	Organic gas	Acetone, toluene, organic solvent
H	○	○	Acid gas	Nitric acid, hydrochloric acid, hydrofluoric acid, acetic acid
S	○	○	Sulfuric gas	Sulfur oxide, hydrogen sulfide, mercaptan
N	○	○	Alkaline gas	Ammonia, amines, NMP
O	○	—	Oxidizing gas	Ozone · hydrogen peroxide
B	—	○	—	Particle (Medium Performance Filter Media)

※For terms of use, etc., please refer to the "Request" on the back cover.

## Pressure loss

CH



CM

